

DOMINATOR 780

THE ITALIAN WAY OF YACHTING

*Sea will never be
the same again*





Designed by Nature

A revolutionary profile

Distinctive, streamlined, modern lines.
Wide panoramic windows that blur the fine line
between interior and exterior space.





Flying on the sea



*A design
that comes from
the future*

Simply Unique



*An exclusive,
private beach*





A yacht for ever



Beauty is forever.





A romantic terrace, on the sea

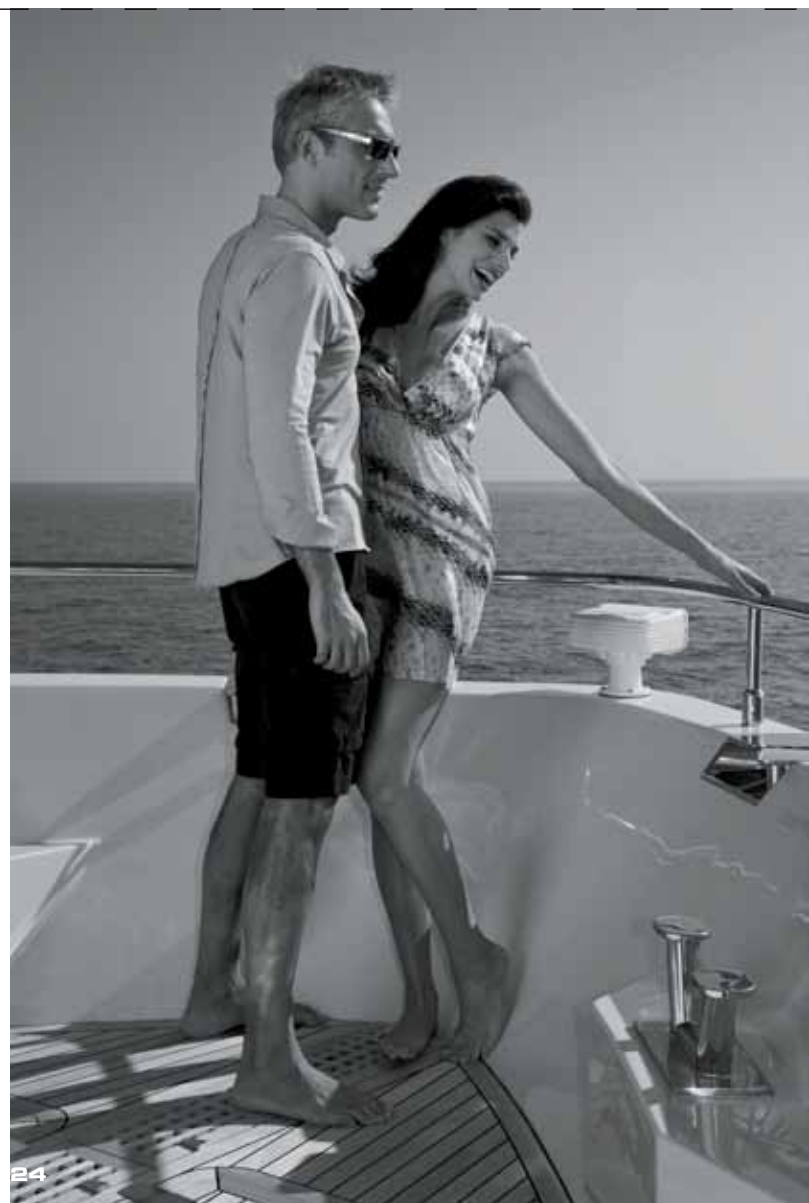
Unforgettable landscapes.
The pleasure of intimacy
cradled by the ocean.





Aeronautic style

Streamlined exterior solutions
that defy Time.



Looking to a new horizon



Unforgettable pleasures

Wide external spaces,
conceived to enjoy life at sea.

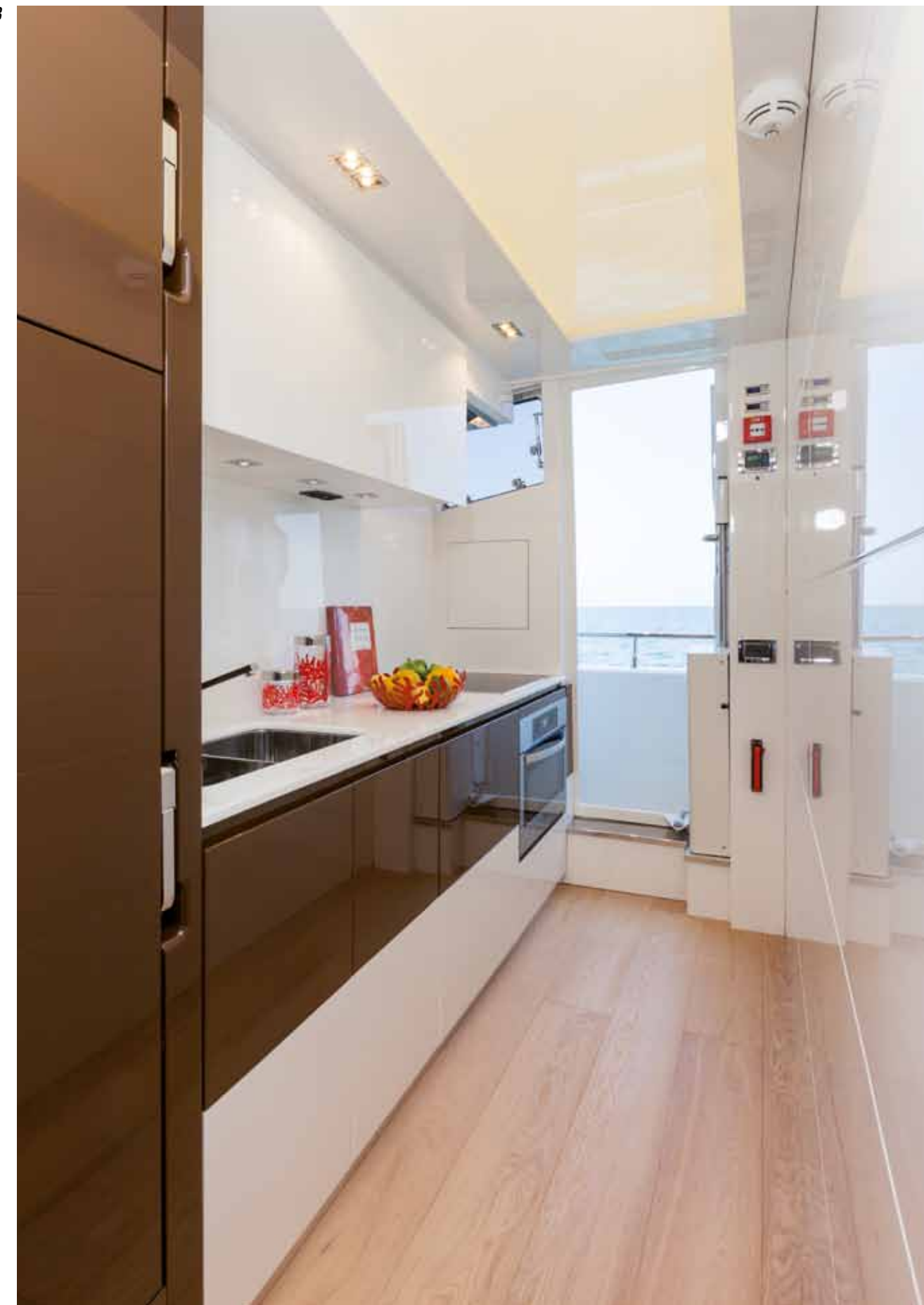


Refinement

Tastefully refined interiors,
tailor-made with the choicest materials.

Main Saloon - Proposal B





Spacious interiors
with high ceilings
for a comfortable
life on-board.

Exclusive luxury



Breathtaking sea views,
from the luxurious saloon
refined with the finest
accessories, materials and hides.





Galley - Proposal A



Class

Refined and elegant finishings for bright and elegant interiors.
A wide selection of furnishings and accessories
of the highest quality to choose from.

Power



Technology at the service
of the best comfort and security on-board.

Dashboard





Italian Style

Highly refined interiors.
The greatest attention to
detail in pure Italian style.





Owner's cabin
oak version

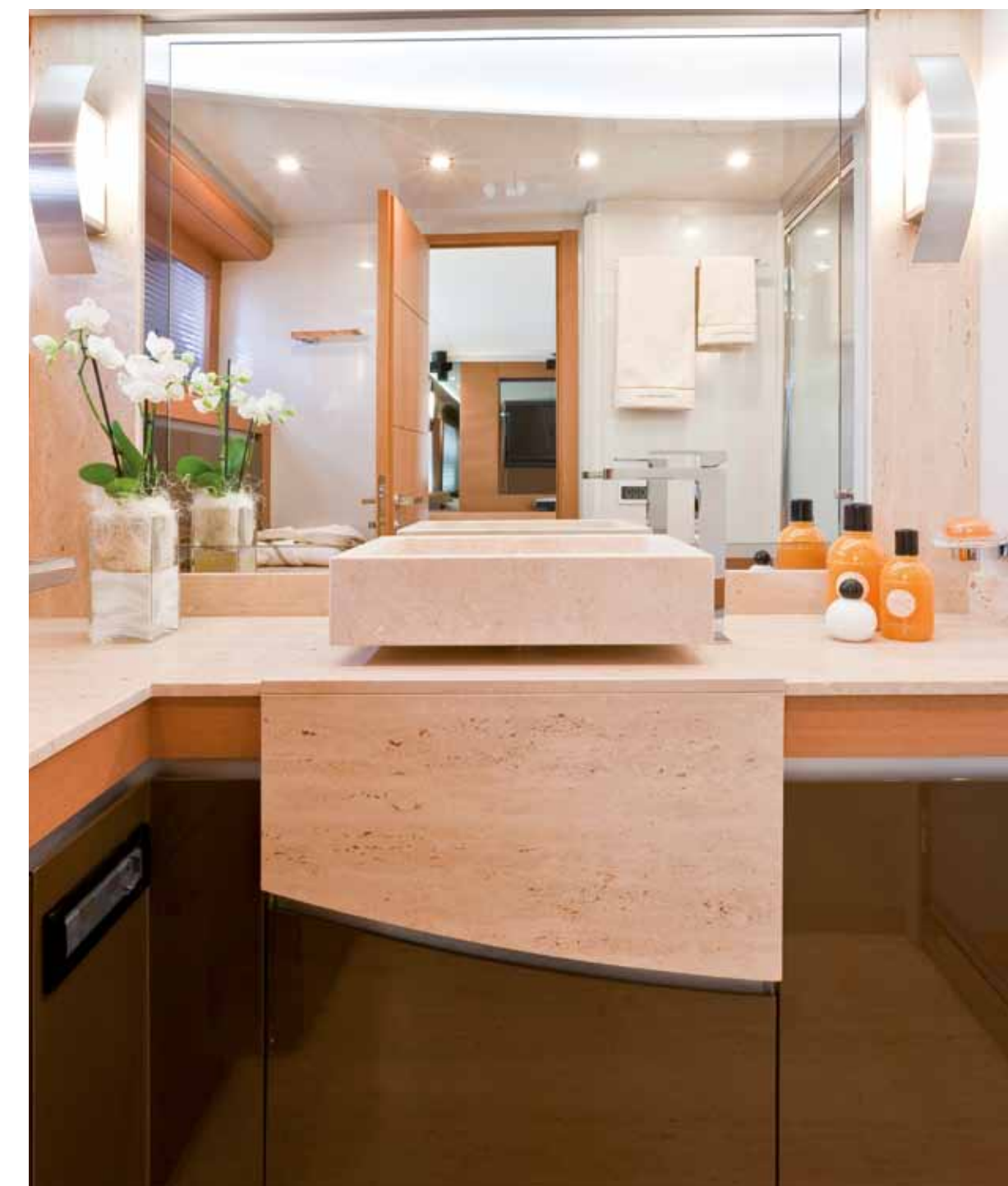
Pleasure and Relax

Spacious and luxuriously furnished owner's cabin.
Marble, wood and precious textile, to make one feel completely at ease.



*Details make
the difference*





*Choose the style of
your suite*

A wide choice of custom furnishings,
accessories, materials and finishings.



Vip bathroom



Vip cabin
oak version

Spoil your guests





Technical Specifications

DOMINATOR 780



- Length overall 24,00 m
- Maximum beam 6,05 m
- Displacement 60 tons
- Fuel tank capacity 7500 L
- Fresh water tank capacity 1500 L
- Engines 2 x MAN from 1360 hp to 1800 hp commonrail
- Generator 2 x 22,5 Kw

INTERNAL DISTRIBUTION

- Cabins + Bathrooms 4+4 (4+5 on request)
- Crew cabins + Bathroom 2+1

Design: Dominator Design & Development

Engineering: Dominator Engineering Division



Flying Bridge



Main Deck - Proposal A



Main Deck - Proposal B



Lower Deck - Proposal A



Lower Deck - Proposal B

Photographs: Antonio Bignami - Alberto Cocchi -su catalogo 780
Printed in Italy on August 2012 - All rights reserved by Dominator International GmbH

There may be items shown in these photographs and artist impressions that are not included in the standard inventory of the models shown. Any eventual print mistake cannot be considered as object of claim. The information in this brochure has been gathered and processed with scrupulous attention by Dominator International GmbH, nevertheless this information may contain printing errors or not be completely updated with regard to technical matters. The company reserves the right to change or update any information and to make improvements or changes to its products, without prior notice. This means that the information in this brochure does not in any way represent a guarantee, and it follows that Dominator International GmbH accepts no responsibility whatsoever for damage caused by access to this brochure. Anyone wishing to purchase a Dominator International GmbH product must check personally that the said product corresponds to descriptions and genuinely meets the needs and requirements of the purchaser.

DOMINATOR

The Shipyard where luxury takes shape



Dominator is not just shape, beauty and luxury but also, and indeed most importantly, substance. We are skilled in responding to the needs of our clients, who consider yachting one of life's pleasures, rather than a fashion trend.

Founded in 1999, the shipyard is based in Fano (Italy) and offers a range of top quality motoryachts. Our exclusive models stand out for their high production quality, reliability and sailing comfort.

Each model is designed and produced through the close working relationship between a team of international top-designers and the shipyard's technical office which covers all the engineering features of the yacht development and building process.

The Dominator philosophy is to design and build custom-made yachts. Owners can make their yachts unique, in keeping with their way of understanding and experiencing the sea. This is possible by means of special technical and furnishing solutions, and the use of valuable materials and top quality finishes, enabling the shipyard to satisfy an extensive range of different expectations and demands.

Typically Italian styling and design are combined with Dominator's custom-made spirit and the soundness and reliability of the yachts: an incomparable match.

Today, the Dominator fleet comprises yachts **640 - 680 - 720 - 780 - 860** and **880**, and ships **29M - 40M**.

