

# DOMINATOR 680

*custom made*









# DOMINATOR 680

THE ITALIAN WAY OF YACHTING





*Reflections of beauty*













DOMINATOR 680 5





# *Luxury emotions*

Passion, emotion, luxury, pleasure.







DOMINATOR 680 7





*The sea is our kingdom*







**DOMINATOR 680 9**















# *Give in to seduction*

Elegance and exclusive luxury.  
The pleasure of seduction.







**DOMINATOR 680 13**







Choose the most beautiful seaside.

*Now it is your pool*







DOMINATOR 680 15





*Pure pleasure*

The exquisite intimacy of the flybridge.  
Just you, the sun and the sea.



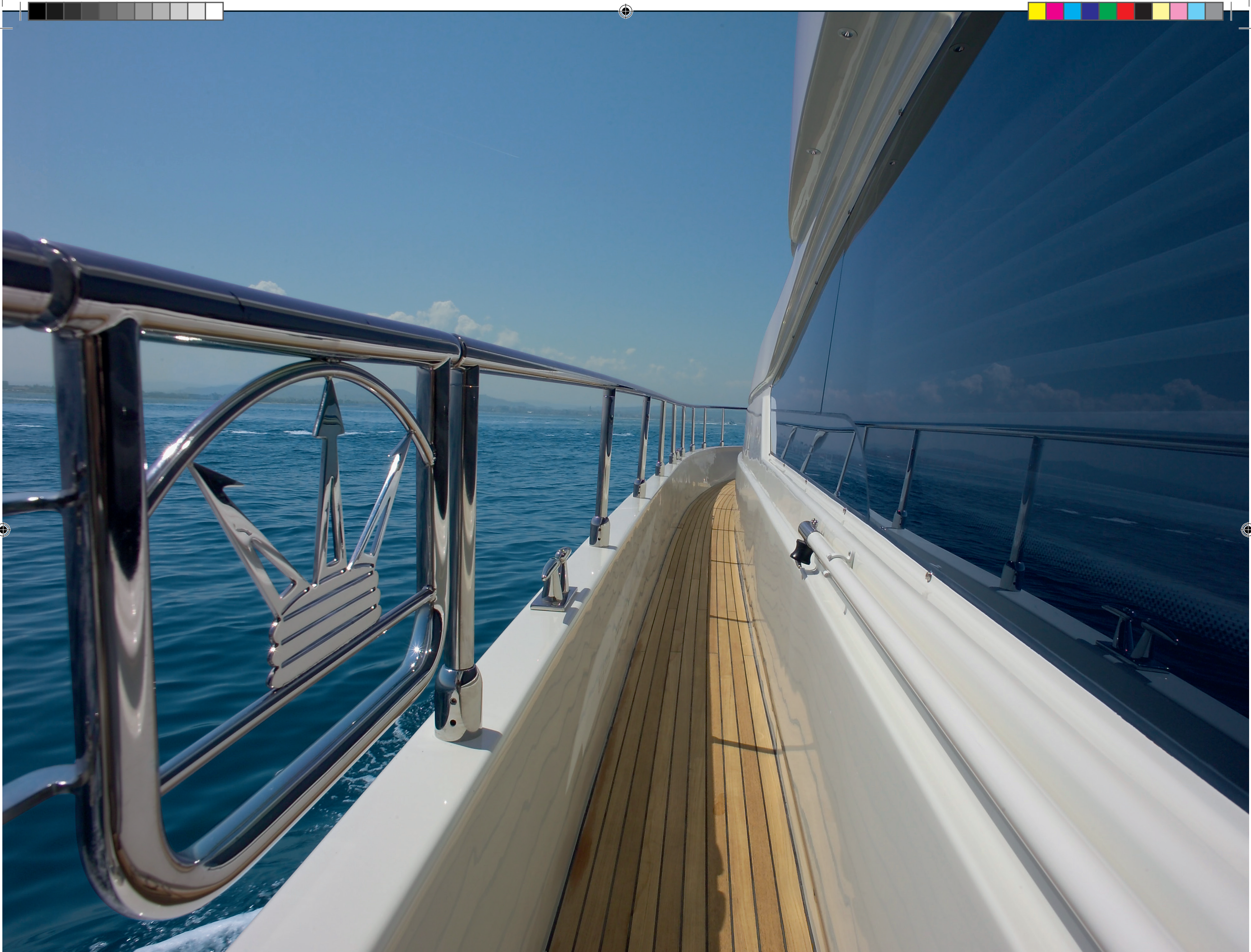




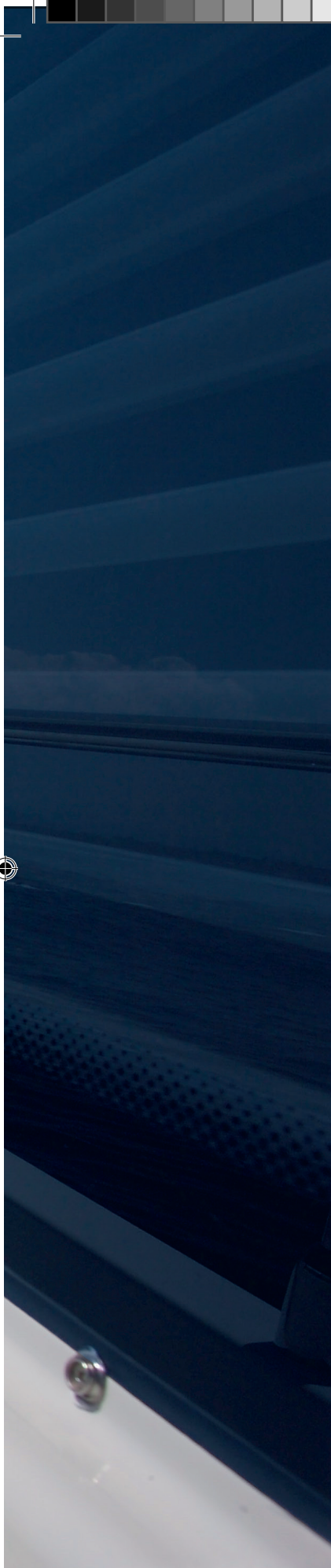
DOMINATOR 680 17











*A new perspective  
on the sea*

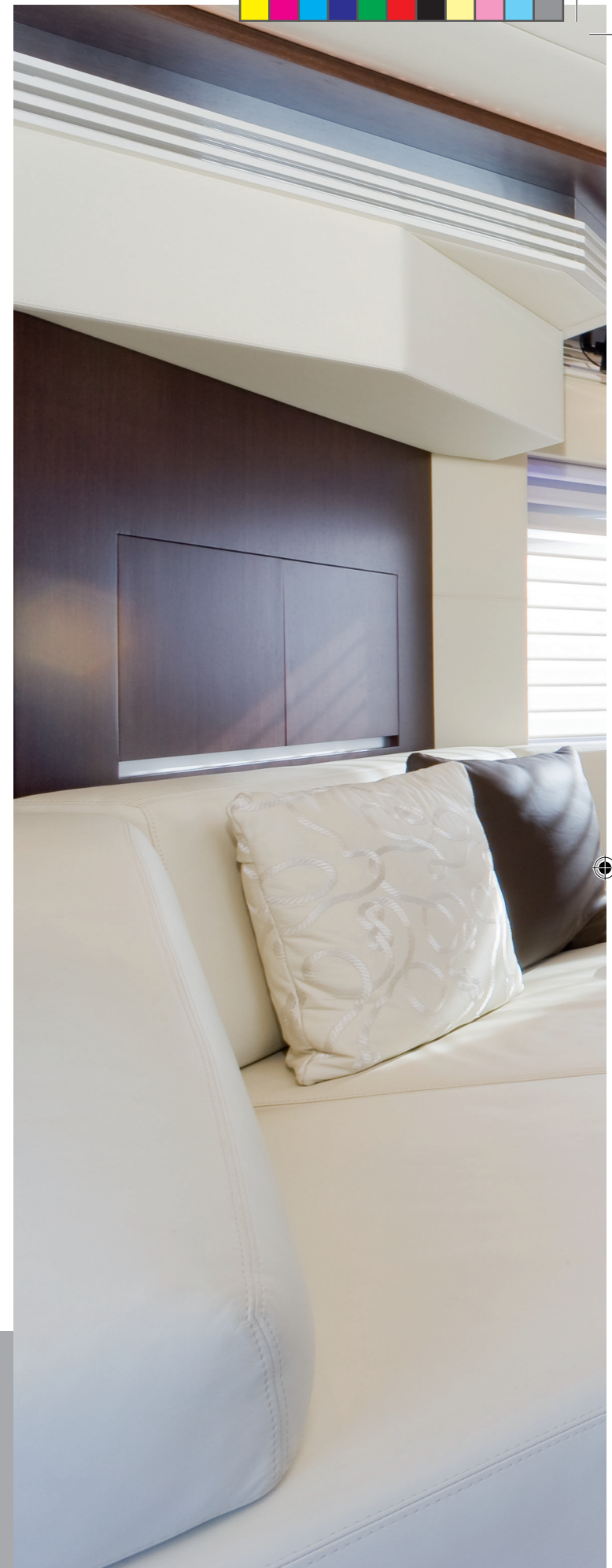




# *Fascination*

Class, glamour, seduction, prestige.

*Main Saloon*











# *Design*

Modern interiors that are bright, spacious and stylishly custom-furnished.  
Don't put limits on what you ask of a yacht.







DOMINATOR 680 23











Kitchen

*The difference is in the details*





# Power

Luxury and dynamic power.  
The pleasure of being in the driving seat.



*Dashboard*









# *Your own suite on the sea*

Ample spaces and customisable accessories and furnishings offering all the comfort anyone could ask for in a suite with two sea-view windows.







DOMINATOR 680 29

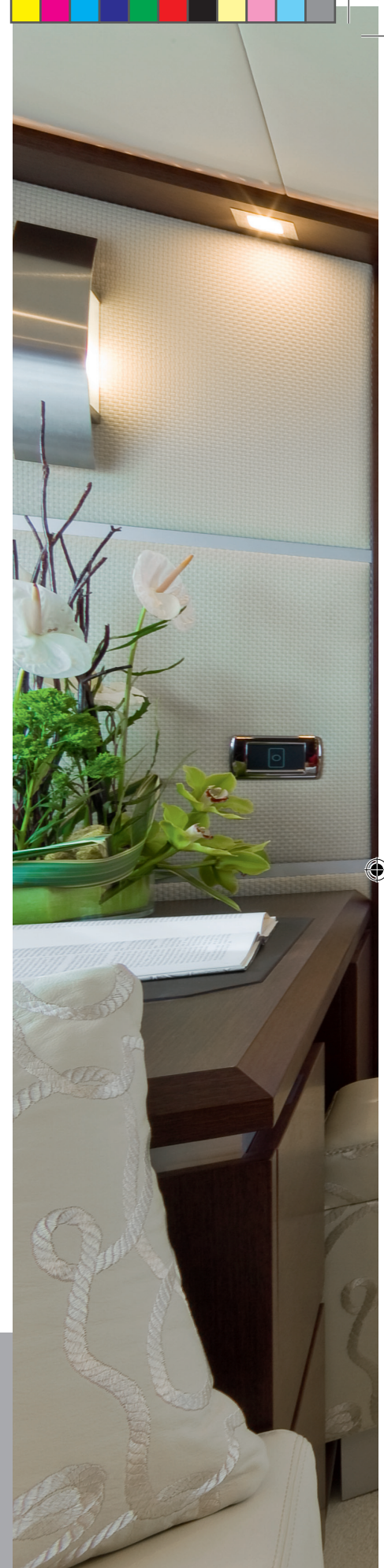




*Style*

Dominator, the ultimate custom yacht.  
Marbles, steels, fabrics and accessories, all personally selected by the owner.

*Owner's cabin*











*Desire becomes yacht*\_\_\_\_\_







DOMINATOR 680 33







*Executive*









# Perfection



The vast window illuminates the VIP cabin enhancing its prestigious fittings and sense of space.

*Vip cabin*







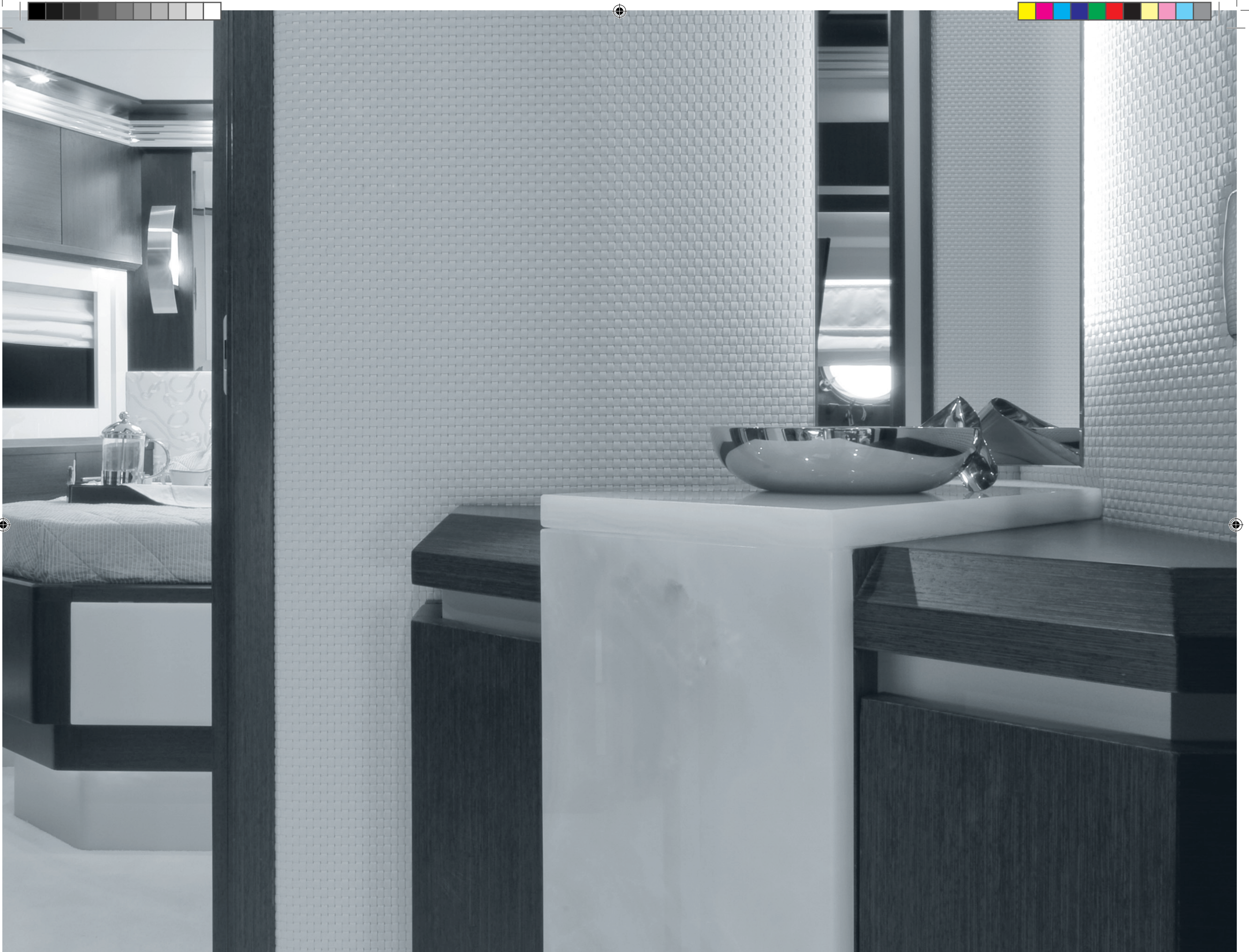




*A style that overrides any fashion*















*Spoil your guests*

The spacious twin-berth guest room boasts completely customisable furnishings.

*Guest cabin*

**DOMINATOR 680 41**







*Guest bathroom*





# Comfort

Functionality, intimacy and comfort thanks to a spacious, beautifully-fitted, ensuite bathroom. Every luxury you could dream of.



DOMINATOR 680 43





*Simply  
irresistible*





# Technical Specifications DOMINATOR 680



Length overall	21,30 m	69 ft 88 in
Maximum beam	5,50 m	18 ft 04 in
Displacement	45 t	99208 lb
Fuel tank capacity	5000 l	1321 US gals
Fresh water tank capacity	1500 l	396 US gals
Engines	2XMAN/MTU from 1100 HP to 1360 HP commonrail	2XMAN/MTU from 1100 HP to 1360 HP commonrail
Generator	1X17,5 kW + 11 kW	1X17,5 kW + 11 kW

## INTERNAL DISTRIBUTION

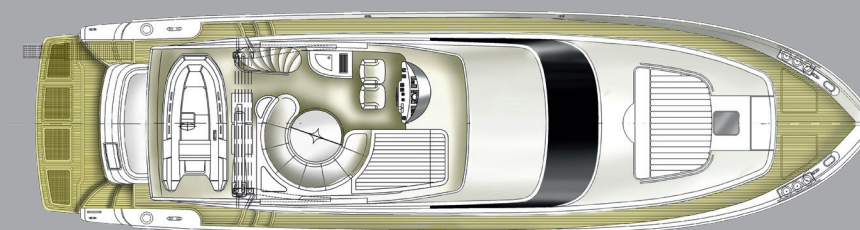
- Cabins + Bathrooms: 3+3 (4 on request)
- Crew Cabin + Bathrooms: 1+1

Concept and exterior design: NUVOLARI naval  LENARD design <sup>TM</sup>

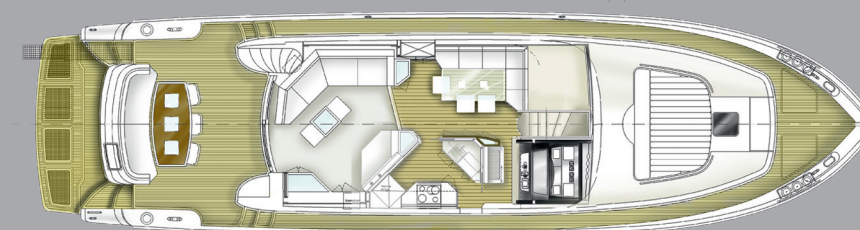
Interior design:  DESIGN BY ENRICO GOBBI

© 2010 by TEAM 4 DESIGN - All rights reserved.

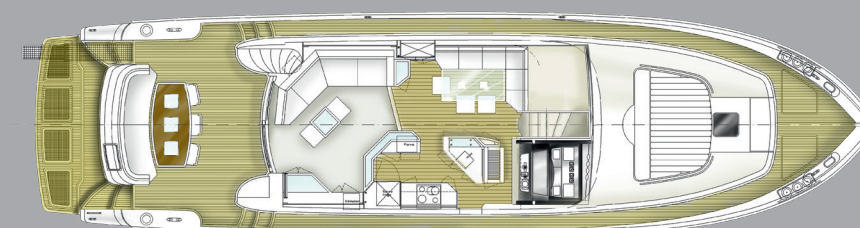
Engineering: Dominator Engineering Division



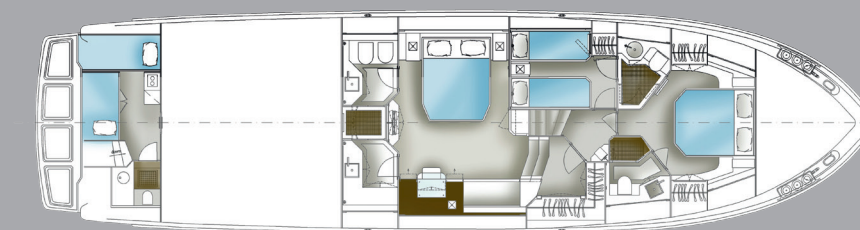
**Flybridge**



**Main Deck proposal A**



**Main Deck proposal B**



**Lower Deck**

There may be items shown in these photographs and artist impressions that are not included in the standard inventory of the models shown. Any eventual print mistake cannot be considered as object of claim.

The information in this brochure has been gathered and processed with scrupulous attention by Dominator International GmbH, nevertheless this information may contain printing errors or not be completely updated with regard to technical matters. The company reserves the right to change or update any information and to make improvements or changes to its products, without prior notice. This means that the information in this brochure does not in any way represent a guarantee, and it follows that Dominator International GmbH accepts no responsibility whatsoever for damage caused by access to this brochure. Anyone wishing to purchase a Dominator International GmbH product must check personally that the said product corresponds to descriptions and genuinely meets the needs and requirements of the purchaser.

  
**DOMINATOR**  
© DOMINATOR 2011



# DOMINATOR

*The Shipyard where luxury takes shape*



Dominator is not just shape, beauty and luxury but also, and indeed most importantly, substance. We are skilled in responding to the needs of our clients, who consider yachting one of life's pleasures, rather than a fashion trend.

Founded in 1999, the shipyard is based in Fano (Italy) and offers a range of top quality motoryachts. Our exclusive models stand out for their high production quality, reliability and sailing comfort.

Each model is designed and produced through the close working relationship between a team of international top-designers and the shipyard's technical office which covers all the engineering features of the yacht development and building process.

The Dominator philosophy is to design and build custom-made yachts. Owners can make their yachts unique, in keeping with their way of understanding and experiencing the sea. This is possible by means of special technical and furnishing solutions, and the use of valuable materials and top quality finishes, enabling the shipyard to satisfy an extensive range of different expectations and demands.

Typically Italian styling and design are combined with Dominator's custom-made spirit and the soundness and reliability of the yachts: an incomparable match.

Today, the Dominator fleet comprises yachts **640 - 680 - 720 - 780 - 860** and **880**, and ships **29M - 40M**.









**[www.dominatoryachts.com](http://www.dominatoryachts.com)**

DOMINATOR INTERNATIONAL GmbH - Millennium Tower Handelskai 94/96 - A - 1200 Wien (Austria) - [welcome@dominatoryachts.com](mailto:welcome@dominatoryachts.com)